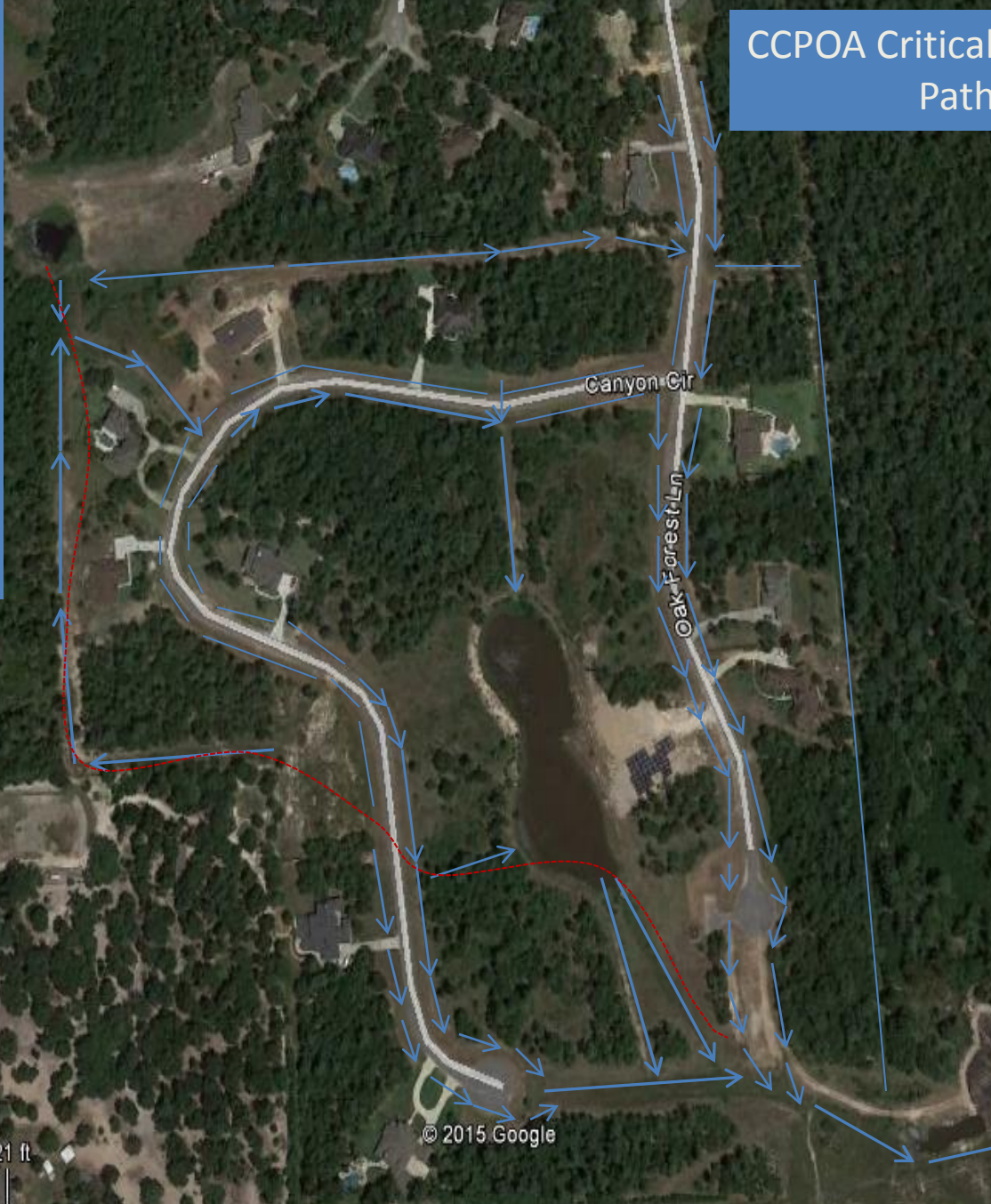


The lines indicate the critical drainage areas that must be maintained by the POA in order to flow surface water through and around Canyon Crossing. Owners are required to keep these areas clear in order to not affect the up stream flow of water around buildings and roadways. They cannot be blocked or altered or the association will incur significant liabilities from the upstream and downstream communities.

CCPOA Critical Drainage Path



- Lines with arrows indicate the direction of water flow.
- Lines without arrows indicate the stagnation point for normal level sheet flows. Water collected in these areas may not flow around or out of the neighborhood until a certain level is accumulated.
- Red dashed line is original bed for Woodson's Creek. Area contains aggregated sediment that facilitates subsurface water migration.

621 ft

© 2015 Google

Google earth

1995

Imagery Date: 7/31/2015 | 30°09'21.16" N 95°24'41.43" W elev 116 ft eye alt 2938 ft